

solids Pipeline Parts

Type CEB / DFR



90° pipe bend, type CEB, made of wear-resistant cast steel

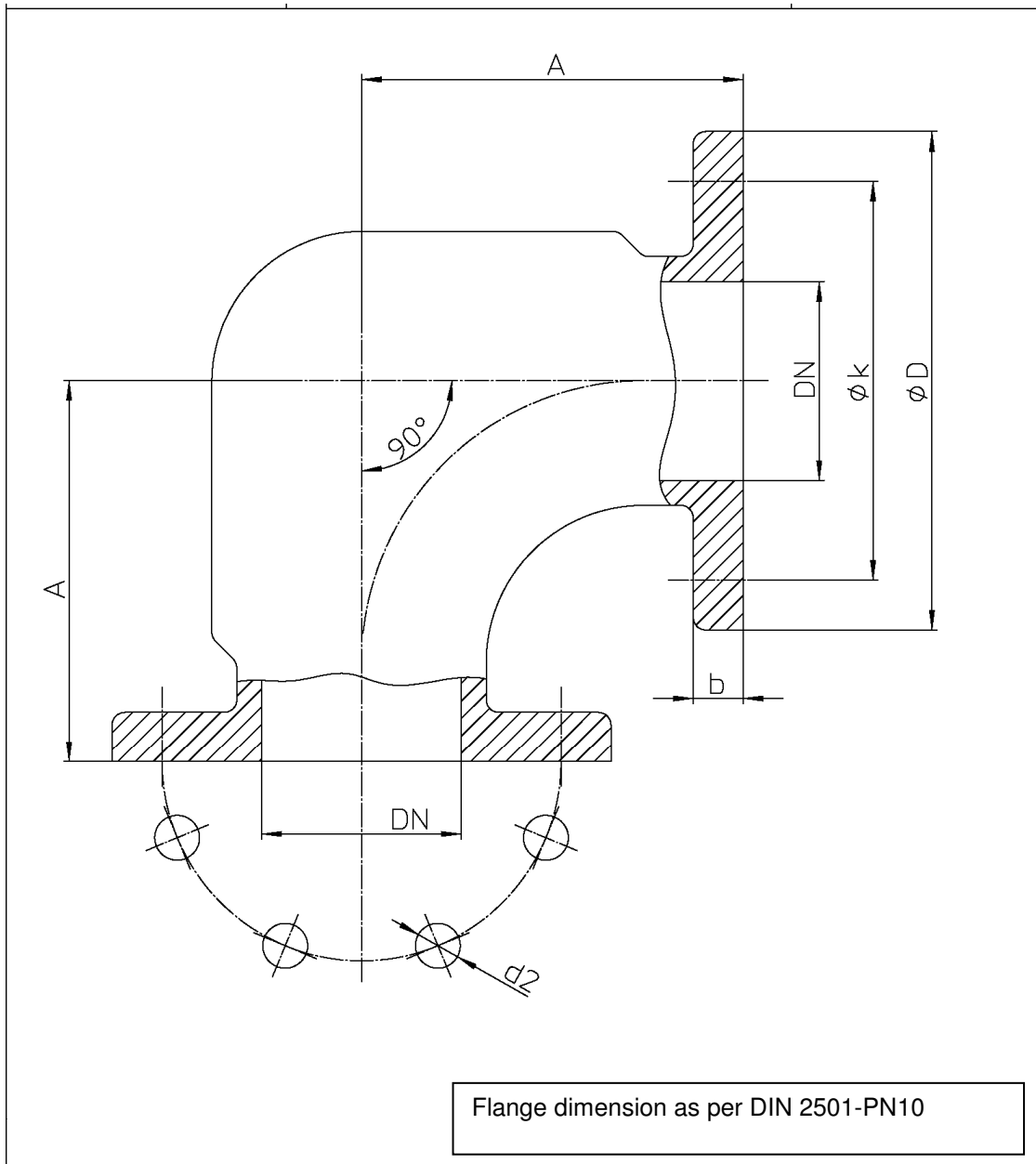


S.S.T.-Schüttguttechnik Maschinenbau GmbH
Lechwiesenstr. 21, 86899 Landsberg / Lech
Tel. 0049 (0)8191-3359-50 / Fax 0049 (0)8191-3359-55
E-mail SST@solids-service.de www.solids.de



solids Pipeline Parts

Type CEB / DFR



Type	DN	A	øD	b	øk	Loch-anzahl	ød2	Gewicht kg.
CE 50	50	129	165	20	125	4	18	7,5
CE 65	65	140	185	20	145	4	18	10,5
CE 80	80	153	200	20	160	8	18	14,0
CE 100	100	175	220	20	180	8	18	21,0
CE 125	125	200	250	22	210	8	18	29,0
CE 150	150	225	285	22	240	8	22	39,0

Dimensions in mm modifications reserved

S.S.T.-Schüttguttechnik Maschinenbau GmbH
 Lechwiesenstr. 21, 86899 Landsberg / Lech
 Tel. 0049 (0)8191-3359-50 / Fax 0049 (0)8191-3359-55
 E-mail SST@solids-service.de www.solids.de

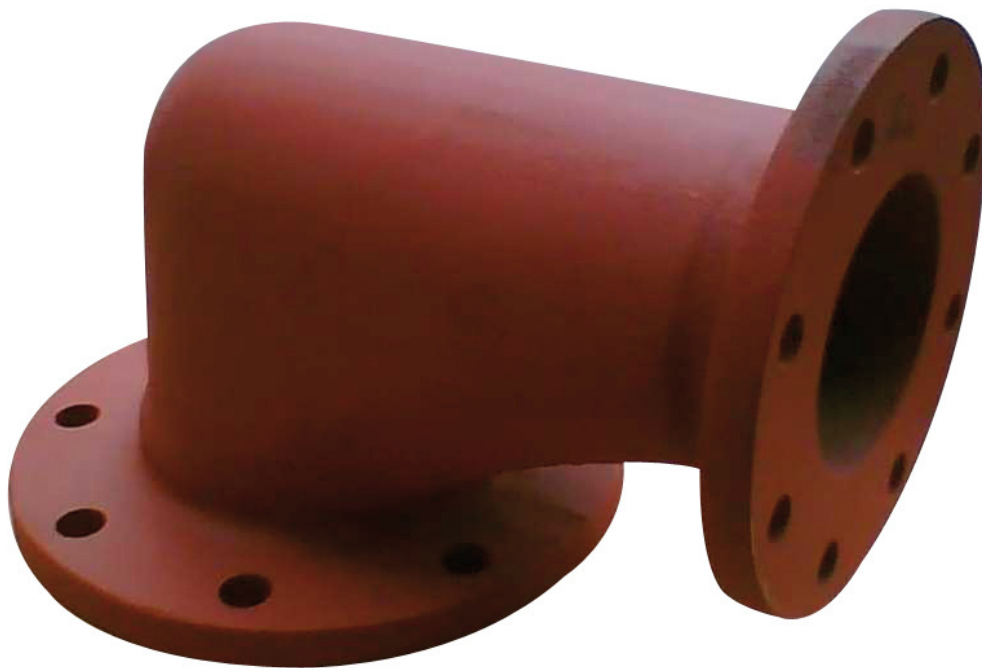


solids Pipeline Parts

Type CEB / DFR



End piece of conveying pipeline, type DFR, made of wear-resistant cast steel

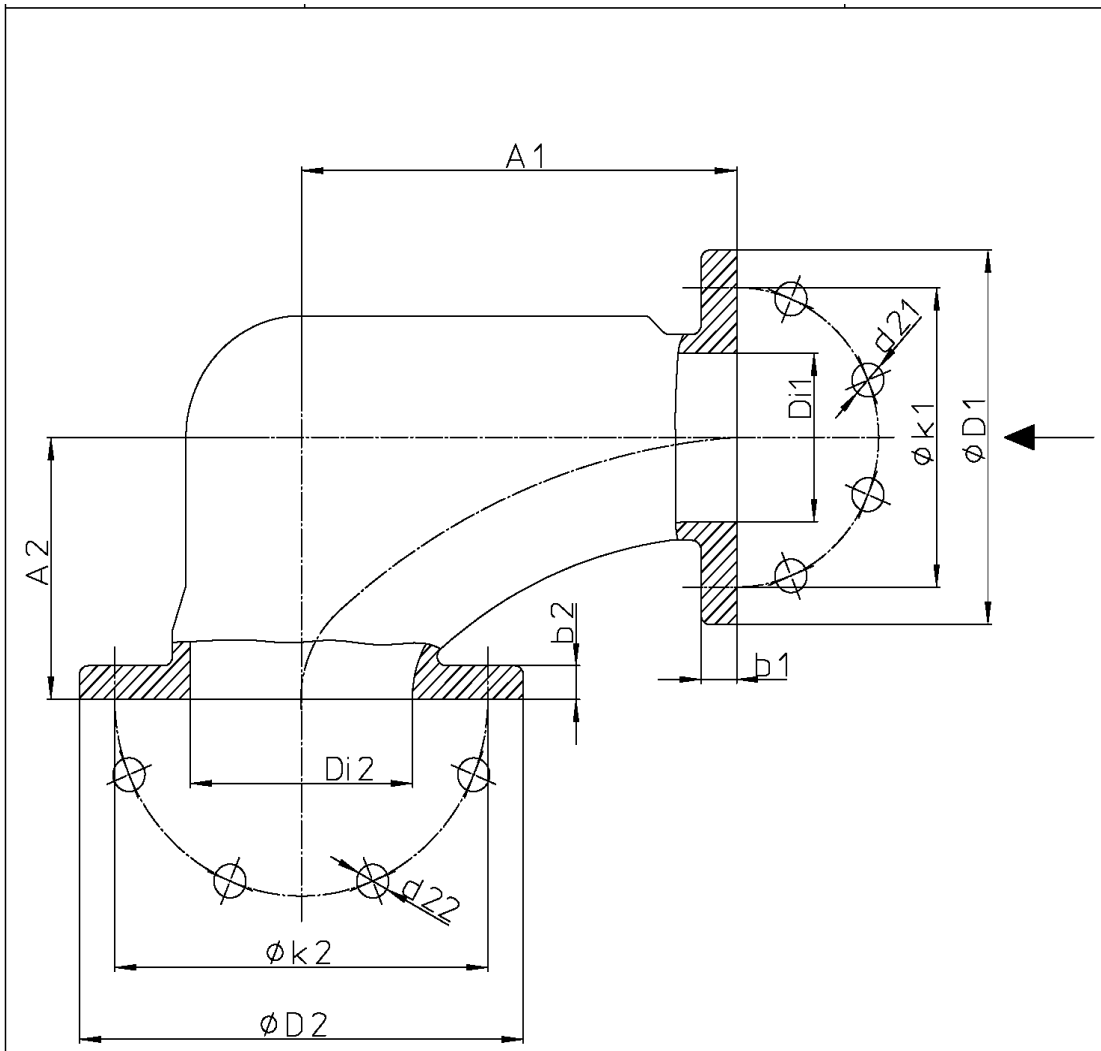


S.S.T.-Schüttguttechnik Maschinenbau GmbH
Lechwiesenstr. 21, 86899 Landsberg / Lech
Tel. 0049 (0)8191-3359-50 / Fax 0049 (0)8191-3359-55
E-mail SST@solids-service.de www.solids.de



solids Pipeline Parts

Type CEB / DFR



DFR 65 is used for DFR 50. With counter flange Ø50.

Flange dimensions as per DIN 2501-PN10

Type	Di1	A1	ØD1	Øk1	b1	Loch-anzahl	Ød21	Di2	A2	ØD2	Øk2	b2	Loch-anzahl	Ød22	Gewicht kg.
DFR 50	75	200	185	145	17	4	18	100	112	220	180	17	8	18	10,5
DFR 65	75	200	185	145	17	4	18	100	112	220	180	17	8	18	10,5
DFR 80	90	245	200	160	18	8	18	125	140	250	210	18	8	18	16,0
DFR 100	110	260	220	180	18	8	18	150	150	285	240	18	8	22	22,0
DFR 125	125	300	250	210	20	8	18	200	175	340	295	20	8	22	28,5
DFR 150	150	330	285	240	22	8	22	250	195	395	350	22	12	22	41,5

Dimensions in mm modifications reserved

S.S.T.-Schüttguttechnik Maschinenbau GmbH
 Lechwiesenstr. 21, 86899 Landsberg / Lech
 Tel. 0049 (0)8191-3359-50 / Fax 0049 (0)8191-3359-55
 E-mail SST@solids-service.de www.solids.de

