



Datasheet

solids - Self Cleaning Rotary Valve

RRS-Basic



Operating conditions:

Permissible operating pressure: 0,9 bar abs. till <0,5 bar g

Max. temperature: 150° C

Bulk solids data:

Particle size: Powdered, up to medium hardness,

Fluidity: from good up to difficult fluidity

Type *	Inlet / Outlet	Height	V / Revolution	Weight
RRS25009B01	250x250 mm	480 mm	8,97 dm ³	150 kg
RRS25010B01	250x300 mm	480 mm	10,68 dm ³	180 kg
RRS25014B01	250x400 mm	480 mm	14,11 dm ³	210 kg
RRS25017B01	250x500 mm	480 mm	17,53 dm ³	230 kg
RRS35024B01	350x350 mm	670 mm	24,48 dm ³	250 kg
RRS35034B01	350x500 mm	670 mm	34,40 dm ³	290 kg
RRS35041B01	350x600 mm	670 mm	41,02 dm ³	330 kg
RRS35047B01	350x700 mm	670 mm	47,64 dm ³	370 kg
RRS50070B01	500x500 mm	970 mm	70,25 dm ³	450 kg
RRS50083B01	500x600 mm	970 mm	83,76 dm ³	500 kg
RRS50097B01	500x700 mm	970 mm	97,27 dm ³	550 kg
RRS500110B01	500x800 mm	970 mm	110,78 dm ³	600 kg

* further intermediate sizes on request

Basical version:

Body: welded steel construction - carbon steel

Rotor: welded steel construction - carbon steel

5 chambers, adjustable blades

Forced scraper, counter-rotating with respect to the rotor;
ensure complete emptying of the chambers, replaceable,
adjustable

External separated bearing

Shaft seal: gland packings with sealing/purge air
connection

Drive: direct Motor: three-phase geared motor

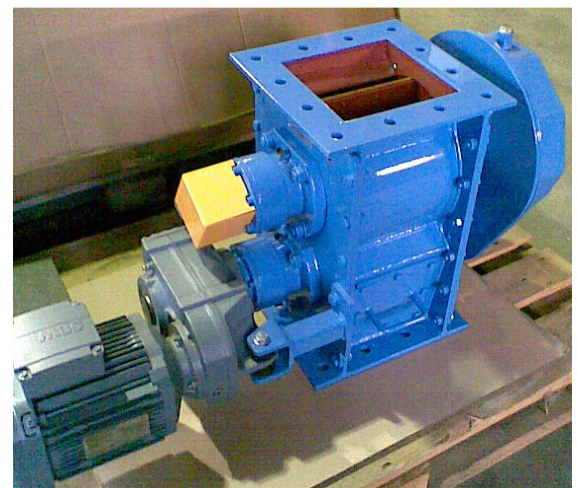
Make: SEW, specified separately

Design: Shaftmounted gear with torque arm

Surface treatment: sand blasted

Primer 40 µm zinc phosphate

Top coat 40 µm 2-component polyurethane, RAL5012 blue



approval:	MIGSA	SST	H. Linder	
	Date:	Sign:	Date:	Sign:
			11.3.13	Le
			11.3.13	Li

Preliminary
modifications reserved



solids solutions group
www.solids.eu



Datasheet

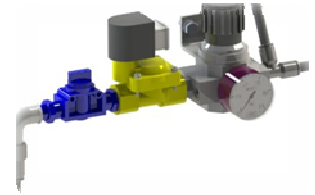
solids - Self Cleaning Rotary Valve

RRS-Basic



Optionen:

1. Rotor and scraper made of 1.4306
2. Inlet for granules, grain size $>500 \mu\text{m}$, made of carbon steel incl. connection parts assembled
3. Leakage air collector with granule inlet, grain size $> 500 \mu\text{m}$, made of carbon steel incl. connection parts assembled
4. Leakage air collector for non-granules, made of carbon steel incl. connection parts assembled
5. Blowing shoe for pneumatic transport made of carbon steel incl. connection parts assembled
6. With M12 inductive detector for turning detection
7. pneumatic installation for sealing/purge air, consisting of 2/2-way solenoid valve, pressure regulator and nozzles
8. Electric components outside suitable for zone 2/22
9. Electric components outside suitable for zone 1/21



Related documents:

3D-Part: Type.step (example: **RRS25009B01**. Step)

2D-planning drawing: Type.dxf (example: **RRS25009B01**. dxf)

Selection criteria: SG-RRS

Pricelist: PL-RRS-Basic



solids solutions group
www.solids.eu