



# Datasheet

## Solids- Slide Gate

### FSP-Basic



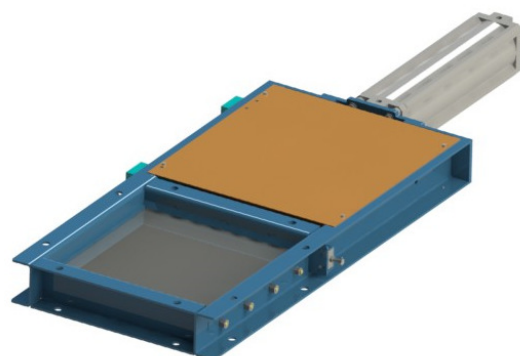
### Operating conditions:

- Dust tight. Max. temperature.:250°C
- Min/Max ambient temperature: -20°C ≤ T ≤ +50°C
- Solid to bulk data: Particle size: powders and granules up to 20mm, medium hardness  
Fluidity: for products up to very difficult flowing

Type	Input/Output	Height	Weight
<b>FSP015B01</b>	150x150 mm	100 mm	31 kg
<b>FSP020B01</b>	200x200 mm	100 mm	37 kg
<b>FSP025B01</b>	250x250 mm	100 mm	42 kg
<b>FSP030B01</b>	300x300 mm	100 mm	50 kg
<b>FSP035B01</b>	350x350 mm	100 mm	58 kg
<b>FSP040B01</b>	400x400 mm	100 mm	69 kg
<b>FSP045B01</b>	450x450 mm	100 mm	75 kg
<b>FSP050B01</b>	500x500 mm	100 mm	83 kg
<b>FSP060B01</b>	600x600 mm	100 mm	100 kg
<b>FSP070B01</b>	700x700 mm	120 mm	160 kg
<b>FSP080B01</b>	800x800 mm	120 mm	200 kg

### Basical version:

- Structure made of carbon steel.
- Flanges with holes according datasheet.
- Shear plate made of carbon steel
- Cover plate carbon steel.
- Aramid fiber gasket with PTFE
- Directly coupled double effect pneumatic cylinder
- Surface treatment: chemical stripping, primer 40 µm of zinc phosphate, painted with 40 µm of 2-component polyurethane, Blue RAL5012



This is not an equipment according ATEX-directive 2014/34/EU, but in contact with product (inside) usable in the zones 20-21-22. Additional electrical parts must be approved for the chosen ATEX-zone.

approval	MIGSA		SST		Mr. Linder	
	date:	sign:	date:	sign:	date:	sign:

Preliminary  
Modifications reserved



**solids solutions group**  
[www.solids.eu](http://www.solids.eu)



# Datasheet

## Solids- Slide Gate

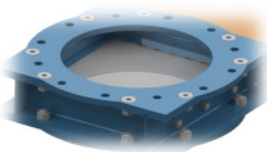
### FSP-Basic



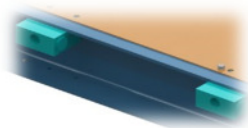
### Options:

1. Shear plate of wear-resistant steel.
2. Shear plate of 1.4306 stainless steel

3. With round inlets and outlets with PN6 flange
4. With round inlets and outlets with PN10 flange



5. Mechanical limit switches



6. Inductive detectors M12



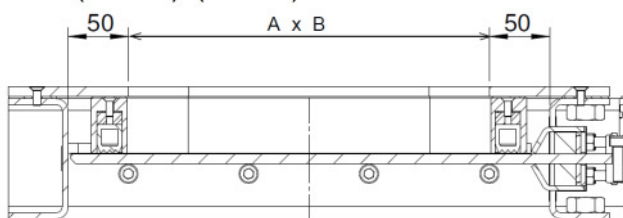
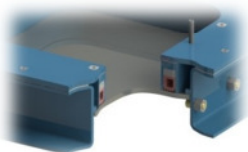
7. Magnetic detectors



8. solenoid valve for cylinder control



9. Sealtight. With inflatable silicon seal, 3bar sealed. Housing width =  $(A+100) \times (B+100)$



10. With electropneumatic unit for seal pressur

11. Airtight at 0,5 bar and minus 100 mbar underpressure

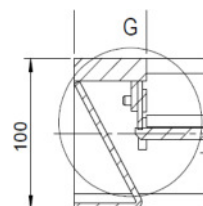


12. parts in contact with product made of stainless steel 1.4306

13. parts in contact with product made of stainless steel 1.4404

14. Intermediate position with an additional inductive detector and pneumatic installation, consisting of 2 solenoid valves, check valve and throttle

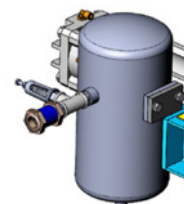
15. Coarse product baffle to prevent from jam coarse particles



16. electrical parts outside for zone 2/22

17. electrical parts outside for zone 1/21

18. Air tank and electro pneumatic installation for opening or closing the slide gate in case of power failure



### Associated documents:

- 3D-part: Type.step (e.g. : **FSP020B01**. Step)
- 2D layout drawing: Type.dxf (e.g. : **FSP020B01**. dxf)
- Selection guide: SG-FSP-FSH-DKA-DKH
- Price list: PL-FSP-Basic
- list of drawing numbers: Draw-No-List\_FSP-Basic



**solids solutions group**  
[www.solids.eu](http://www.solids.eu)