



Datasheet

solids - Vacuum Batch Conveyor

VacuFill TSF-Hygienic-Dry



Part of **HOSOKAWA ALPINE**

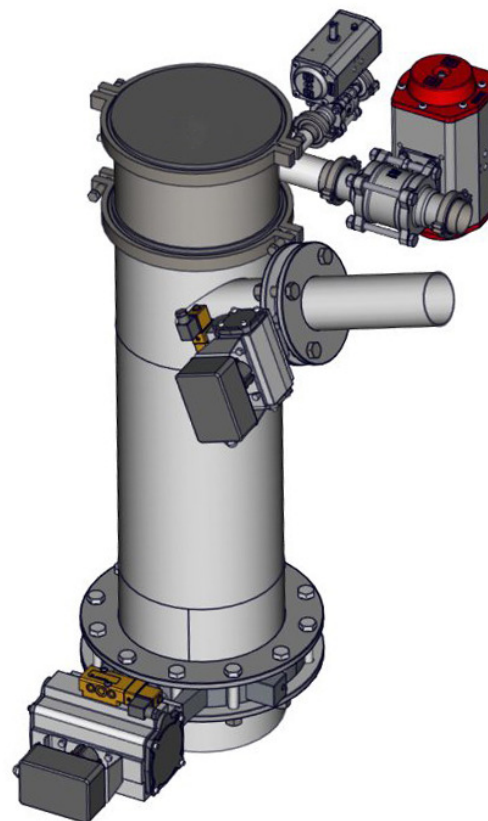
Operating conditions:

- Permissible operating pressure: >0,1 bar absolute to atmospheric
- Product temperature max: 100°C
- Min/Max ambient temperature -10 °C ≤ T ≤ 50 °C
- Bulk solids data: Powdered till granulates, up to medium hardness, free flowing up to limited flowing products

Type	Usable Volume dm3	Batch Times (s)	Inlet-Ø/ Vessel-Ø mm	Height mm	Weight kg
TSF50150YD01A	4,5	10-15	50/150	550	40
TSF80250YD01A	35	18-23	80/250	1255	80
TSF80350YD01A	50	25-30	80/350	1131	120

Basical version:

- According to EU regulations, directives and EHEDG Guidelines and DIN1672-2
- Hygienic-Dry design for dry processes with dry cleaning, for food, pharmaceutical, cosmetic und chemical industry
Construction free from dead zones and gaps
easy to dismantle, easy to clean
Surfaces in contact with the product: Ra < 0,8 µm (sheet metal), weldings inside polished Ra < 0,8 µm
Welded steel construction - stainless steel 1.4306 (DIN) / 304L (AISI)
Outside pickled or brushed and passivated
- Dust housing with filter head made of welded steel construction - stainless steel 1.4306, with centering clamping rings
- With filter made of porous sintered stainless steel for dust separation
- Material inlet: disc valve type DKA Hygienic
- Material outlet: disc valve type DKA Hygienic
- Vacuum-connection: butterfly valve DN80
- Compressed air filter cleaning: ball valve DN25, pressure controller and hand ball valve
- disc valves, butterfly valve and ball valve equipped with solenoid valves and initiators
- Filling cycle only over time possible



This is not an equipment according ATEX-directive 2014/34/EU, but in contact with product (inside) usable in the zones 20-21-22. Additional electrical parts must be approved for the chosen ATEX-zone.

approval:	MIGSA	SST
Date:	Sign:	Date: Sign:

Preliminary modifications reserved



solids solutions group
www.solids.eu



Datasheet

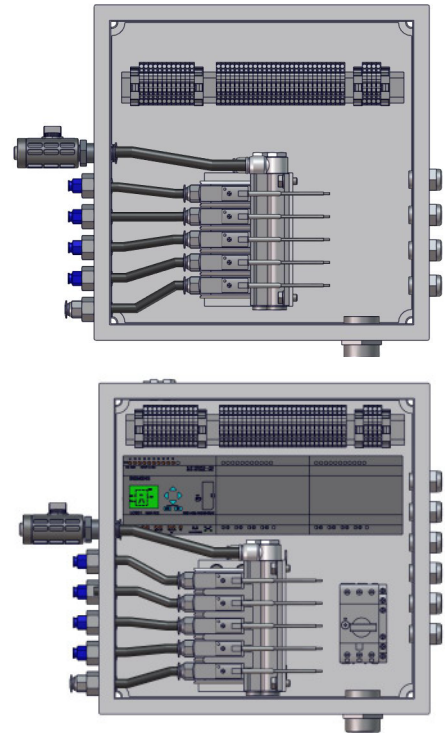
solids - Vacuum Batch Conveyor

VacuFill TSF-Hygienic-Dry



Options:

1. Electropolished
2. Completely made of 1.4404
3. Completely made of 1.4571
- 4.1 Equipped with assembled terminal box for pneumatic made of stainless steel with angled roof; limit switches and sensors are connected to terminal strips. Readily equipped with tubes and cables.
- 4.2 Terminal box same as option 4.1 with additional integrated mikro-SPS-control including the power section, with operating panel and display in the door of the cabinet. In the display are shown the adjustable parameters, which are necessary for the operation. The control can communicate with a superior control by ethernet. The device is wired, equipped with tubes, tested and ready for operation.
- 5 ----
- 6 Claw vacuum pump with three-phase motor 400V 50HZ IP54



	Pipeline-Ø mm *)	Amount of air Nm ³ /h *	Power	Ultimate Pressure bar abs.	Weight kg
6.1	50	140	3,0 kW	0,06	180
6.2	65	250	4,0 kW	0,10	240
6.3	80	390	7,5 kW	0,15	240

*) approximate value

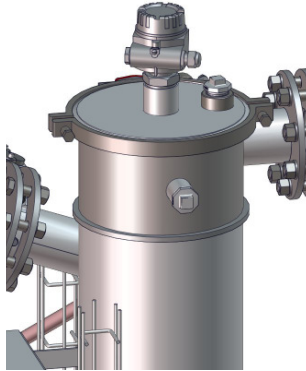
- 6.4. with integrated frequency converter and operating panel
- 7 electrical components outside for zone 2/22
- 8 ----



solids solutions group
www.solids.eu

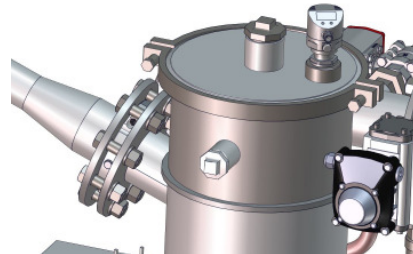
Datasheet
solids - Vacuum Batch Conveyor
 VacuFill TSF-Hygienic-Dry

9 Level switch high



10 Pressure sensor

10.1 At the raw gas side

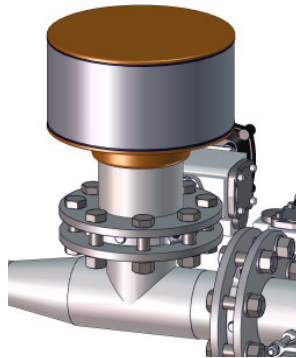


10.2 At the clean gas side

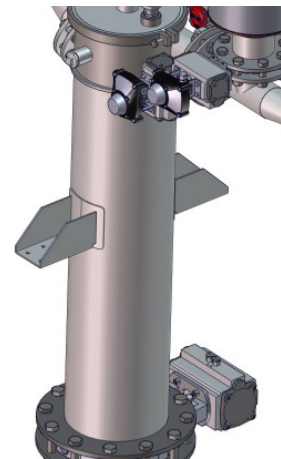
11 Second vacuum connection

12 Back blowing device, pneumatic installation for blowing the vacuum pipeline empty

13 False air valve, consisting of T-piece, butterfly valve type DKA-Hygienic and filter, incl. solenoid valve and initiator



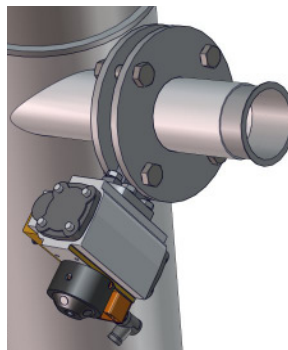
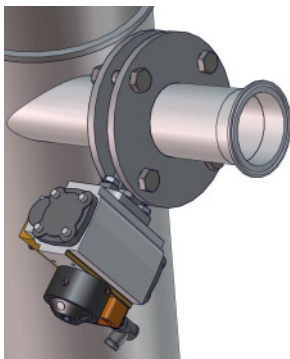
14 2 brackets, welded at the hopper



15 Options for product inlet:

15.1 Clamp-connection
DIN 32676

15.2 Connection for
Jacob-pipe

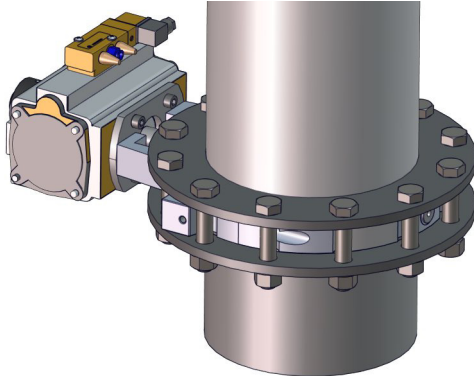


Datasheet
solids - Vacuum Batch Conveyor
VacuFill TSF-Hygienic-Dry

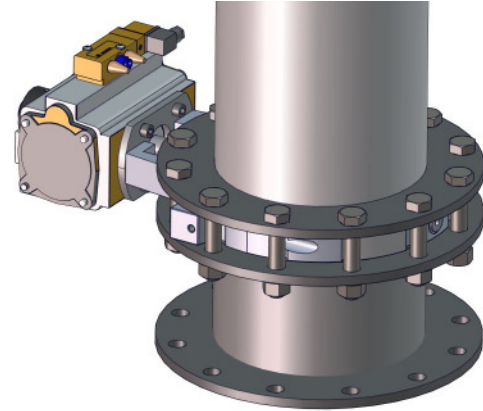


16 Options for product outlet:

16.1 Centering flange PN10 with flat nozzle



16.2 Nozzle with 2 centering flanges PN10



17. ---

Related documents:

3D-Part: Type.step (example: **TSF80250YD01**. Step)

2D-planning drawing: Type.dxf (example: **TSF80250YD01**. dxf)

Selection criteria: SG-TSF

Pricelist: PL-TSF-Hygienic-Dry

Drawing numbers list: Draw-No-List_TSF-Hygienic-Dry



solids solutions group
www.solids.eu