



Datasheet

solids - Vacuum Batch Conveyor

VacuFill TSF-Clean



Part of **HOSOKAWA ALPINE**

Operating conditions:

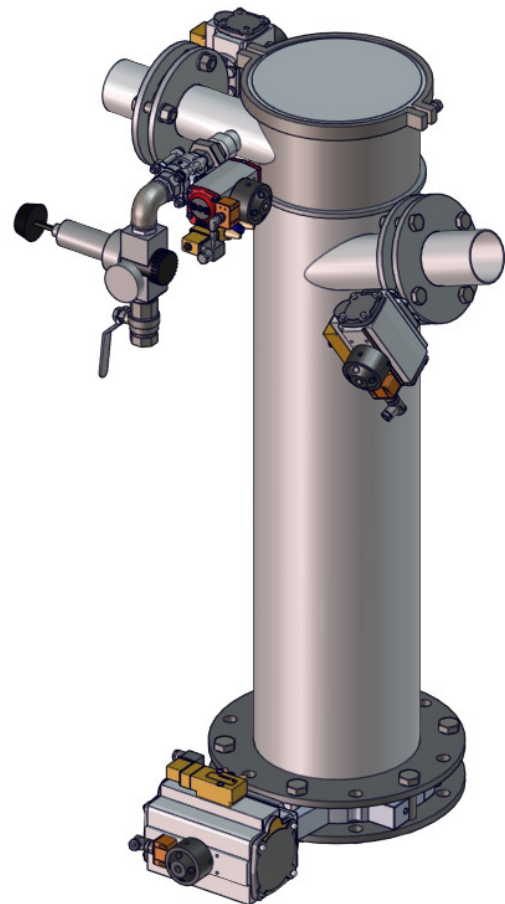
- Permissible operating pressure: >0,1 bar absolute up to atmospheric
- Product temperature max: 100°C
- Min/Max ambient temperature -10 °C ≤ T ≤ 50 °C, dried compressed air required
- Bulk solids data: Powdered till granulates, up to medium hardness, free flowing up to limited flowing products

Type	Usable Volume dm3	Batch Times (s) *	Inlet-Ø/ Vessel-Ø mm	Height mm	Weight kg
TSF50150C01	4,5	10-15	50/150	550	40
TSF80250C01	35	18-23	80/250	1255	80
TSF80350C01	50	25-30	80/350	1131	120

*) up to max. conveying pipeline length of 20 m, exact definition depends on the project

Basical version:

- Dust housing with filter head made of welded steel construction - stainless steel 1.4306
- Weldings continuous free of gap
- With filter made of porous sintered stainless steel for dust separation
- Material inlet: butterfly valve type DKA-Clean
- Material outlet: butterfly valve type DKA-Clean
- Vacuum-connection: butterfly valve type DKA-Clean DN80
- Compressed air filter cleaning: ball valve DN25, pressure controller and hand ball valve
- Dismountable and cleanable
- Butterfly valves and ball valve equipped with solenoid valves and initiators
- Filling cycle only over time possible
- Surface treatment: stainless steel parts pickled and passivated



This is not an equipment according ATEX-directive 2014/34/EU, but in contact with product (inside) usable in the zones 20-21-22. Additional electrical parts must be approved for the chosen ATEX-zone.

approval:	MIGSA	HSS
Date:	Sign:	Date: Sign:

Preliminary modifications reserved



Hosokawa solids solutions
www.solids.eu



Datasheet

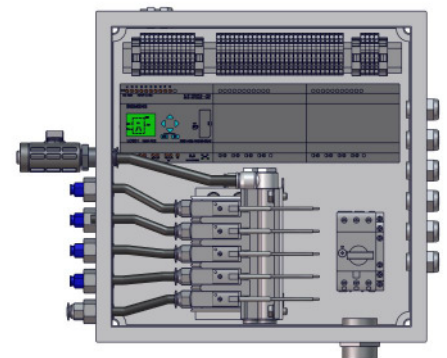
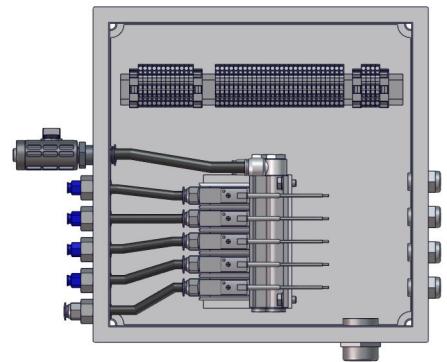
solids - Vacuum Batch Conveyor

VacuFill TSF-Clean



Options:

1. Electropolished
2. Completely made of 1.4404
3. Completely made of 1.4571
4. ----
- 5.1 Equipped with assembled terminal box for pneumatic made of stainless steel; limit switches and sensors are connected to terminal strips. Readily equipped with tubes and cables.
- 5.2 Terminal box same as option 5.1 with additional integrated Micro-SPS-control including the power section, with operating panel and display in the door of the cabinet. In the display are shown the adjustable parameters, which are necessary for the operation. The control can communicate with a superior control by ethernet. The device is wired, equipped with tubes, tested and ready for operation.
6. ----
7. ----
8. electrical components outside for zone 2/22





Datasheet

solids - Vacuum Batch Conveyor

VacuFill TSF-Clean



9. Claw vacuum pump with three-phase motor 400V 50HZ IP54

	Pipeline-Ø mm *)	Amount of air Nm ³ /h *	Power	Ultimate Pressure bar abs.	Weight kg
9.1	50	140	3,0 kW	0,06	180
9.2	65	250	4,0 kW	0,10	240
9.3	80	390	7,5 kW	0,15	240

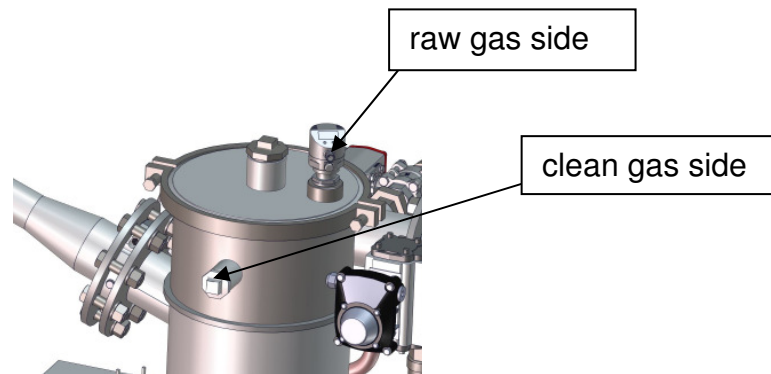
*) approximate value

9.4 with integrated frequency converter and operating panel

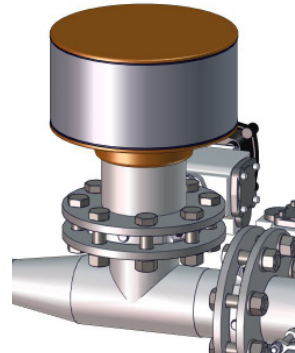
10. Pressure sensor

10.1 At the raw gas side

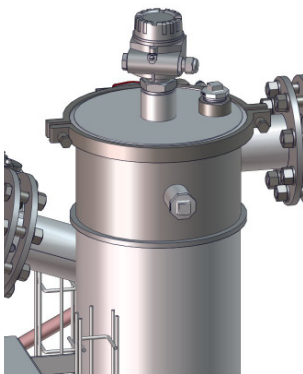
10.2 At the clean gas side



11. False air valve, consisting of T-piece, butterfly valve type DKA-Clean and filter, incl. solenoid valve and initiator



12. Level switch high





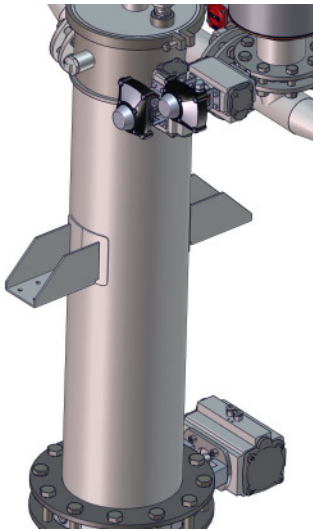
Datasheet

solids - Vacuum Batch Conveyor

VacuFill TSF-Clean

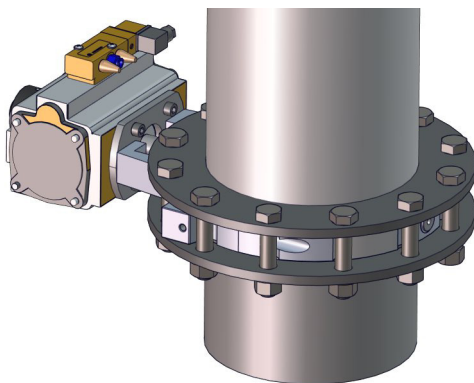


13.2 Brackets, welded at the hopper

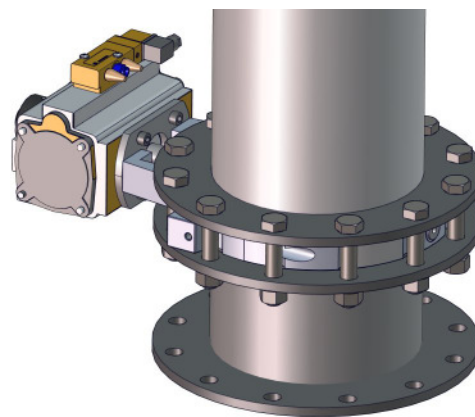


14. Options for product outlet:

14.1 Flange PN10 with flat nozzle



14.2 Nozzle with 2 flanges PN10

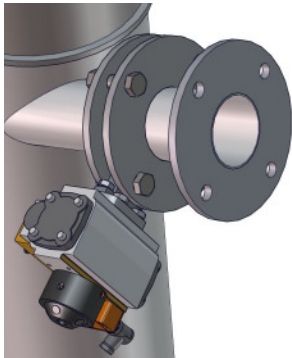




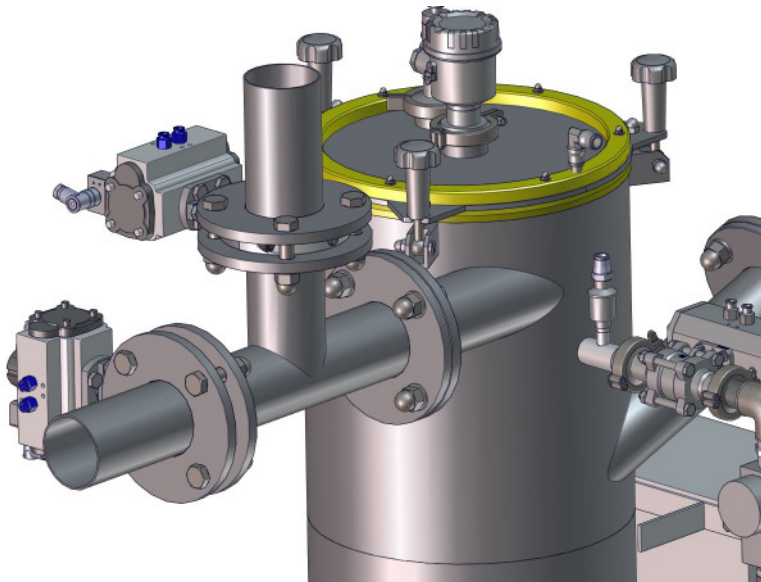
Datasheet
solids - Vacuum Batch Conveyor
VacuFill TSF-Clean



15. product inlet: Flat flange PN10



16. With 2 vacuum-connection:: consisting of T-piece and 2 butterfly valve type DKA-Clean



17. Material outlet: butterfly valve type DKA-D-Clean

Related documents:

3D-Part: Type.step (example: **TSF50150C01**. Step)

2D-planning drawing: Type.dxf (example: **TSF50150C01**. dxf)

Selection criteria: SG-TSF

Pricelist: PL-TSF-Clean

Drawing numbers list: Draw-No-List_TSFClean



Hosokawa solids solutions
www.solids.eu