



Datasheet solids – Pneumatic Sender PIP-Basic



Pneumatic dense phase conveying by a push conveying process with high load and slow conveying speed for gentle conveying; suitable for sensitive and abrasive bulk solids

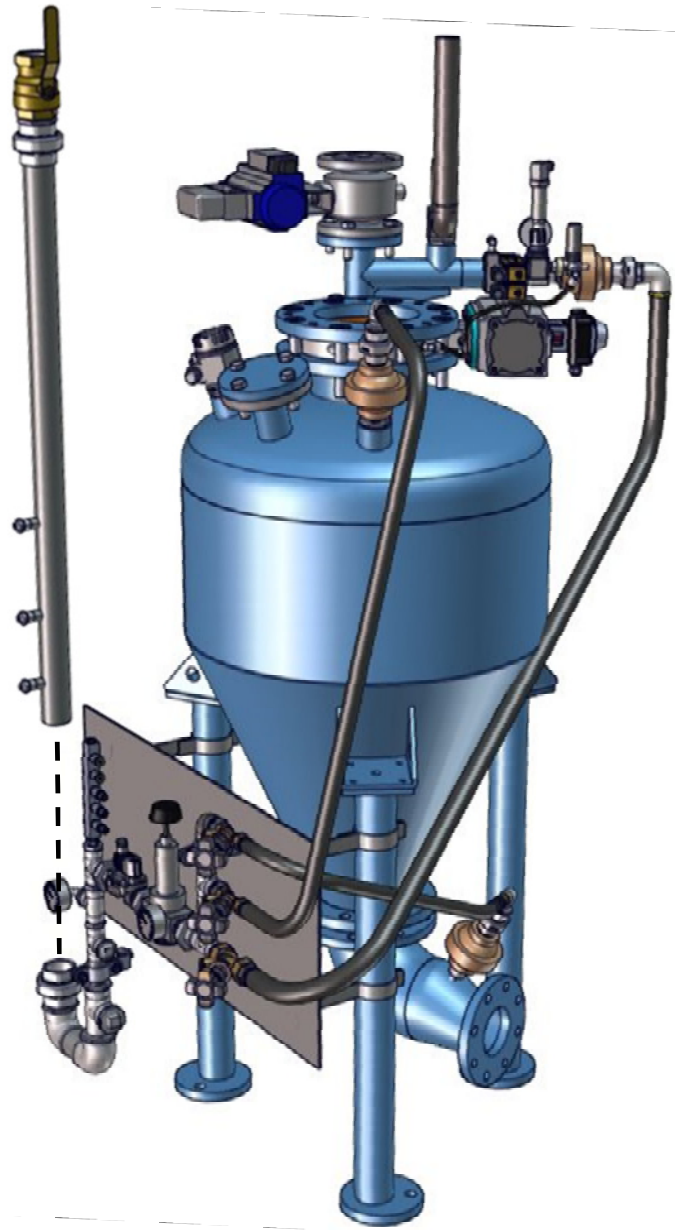
Operation purpose:

Pneumatic pressure conveying vessel with complete facilities.

Discontinuous operation, filling with bulk solid when the inlet valve is open under atmospheric conditions. Then locking pressure tight, and discharging the bulk solid and conveying with compressed air into the connected pipeline.

Advantages:

- For granulates, dusts and mixtures
- Slow and gentle conveying with less compressed air and energy consumption
- Simple, cost-effective system assembly
- Less wear and tear due to low speed
- No segregation of mixtures
- Efficient operation even with inert gases
- No angel hair formation in case of plastic granulates
- Small exhaust air filters due to low air volumes
- No particle breakage due to mechanical moving parts
- High reliability of operation due to the possibility for controlling the working parameters



approval:	MIGSA		SST		H. Linder	
	Date: 26.9.16	Sign: Ru	Date: 21.9.16	Sign: Le	Date: 21.9.16	Sign: Li

Preliminary
modifications reserved



solids solutions group
www.solids.eu





Datasheet solids – Pneumatic Sender PIP-Basic



Operating conditions:

- Permissible operating pressure: 3 barÜ
- Load cycles between 0 and 3 bar: rated for endurance strength, from type PIP10013B01 on permissible number of load cycles 500000
- Product temperature max: 70° C
- Max/Min ambient temperature: -10 °C ≤ T ≤ 50 °C
- Bulk solids data: Powdered till granulates, up to middle hardness, from free flowing up to limited flowing products

Type	geom. Volume dm ³	Volume for Use dm ³	Inlet-Ø mm	Height mm	Weight kg
PIP00405B01	40	30	200/50	845	160
PIP00605B01	65	45	200/50	945	180
PIP00905B01	90	65	200/50	1105	200
PIP01207B01	125	75	200/50	1040	235
PIP02507B01	250	180	200/50	1340	260
PIP03507B01	350	300	200/50	1640	285
PIP04507B01	450	390	200/50	1940	305
PIP05507B01	550	490	200/50	2240	330
PIP04510B01	450	300	250/100	1855	390
PIP06510B01	650	520	250/100	2155	435
PIP09010B01	900	750	250/100	2455	480
PIP12010B01	1200	1050	250/100	2855	540
PIP10013B01	1000	650	350/100	2170	600
PIP15013B01	1500	1150	350/100	2570	680
PIP20013B01	2000	1700	350/100	2970	760
PIP25013B01	2500	2200	350/100	3370	840



solids solutions group
www.solids.eu



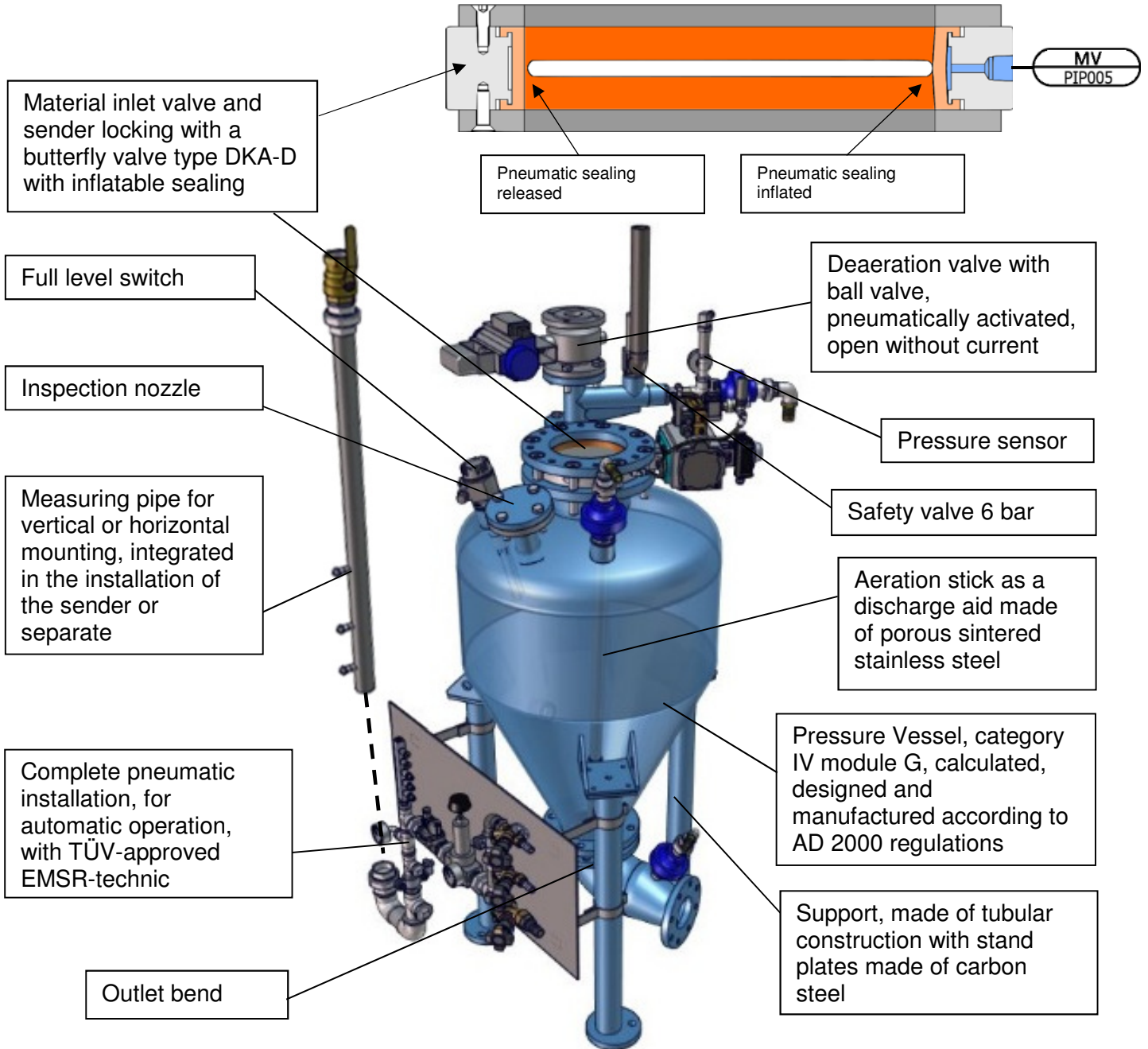


Datasheet solids – Pneumatic Sender PIP-Basic



Basical version:

- Complete assembly TÜV-approved according to pressure equipment directive 2014/68/EU
- Welded steel construction – carbon steel



This is not an equipment according ATEX-directive 2014/34/EU, but in contact with product (inside) usable in the zones 20-21-22. Additional electrical parts must be approved for the chosen ATEX-zone.

Surface treatment:

Chemical stripped, Primer 40 µm zinc phosphate,
Top coat 40 µm 2-component polyurethane, RAL5012 blue



solids solutions group
www.solids.eu



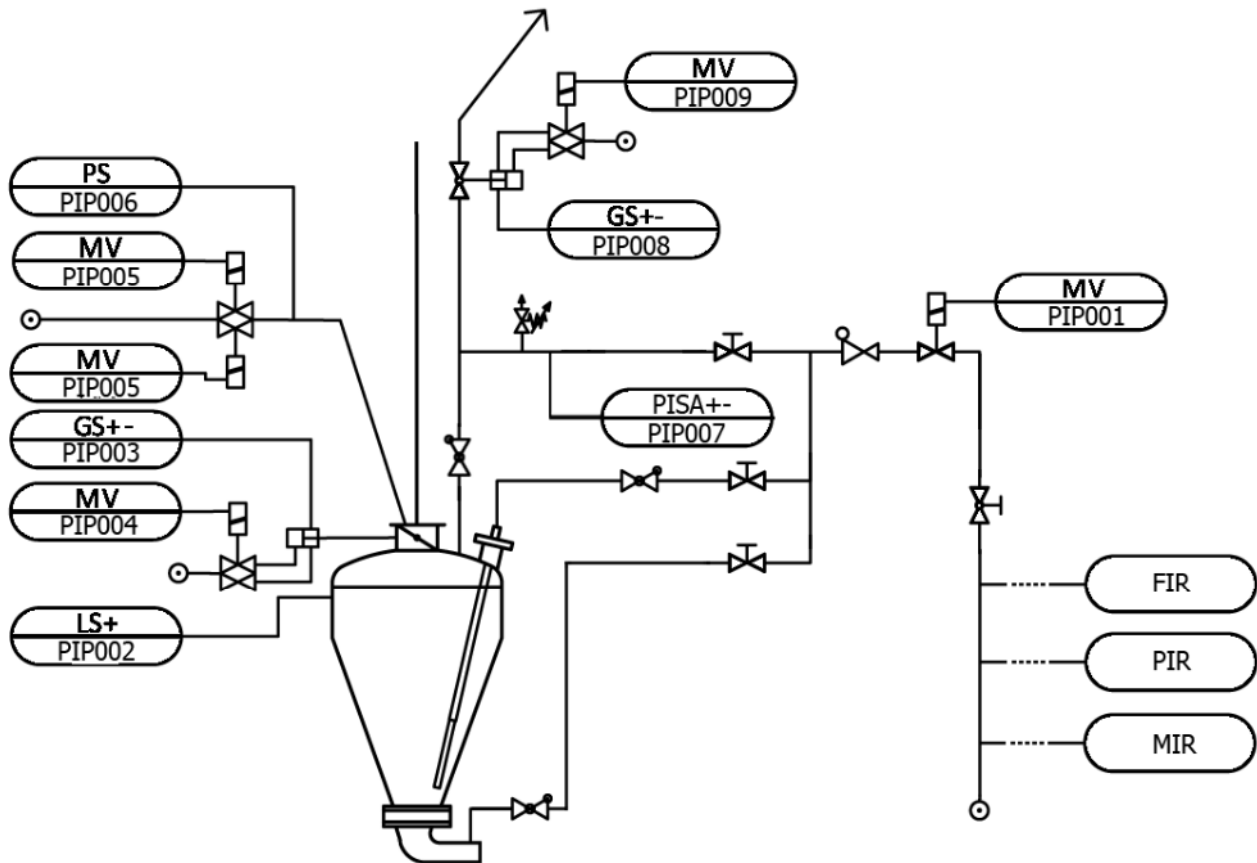


Datasheet solids – Pneumatic Sender PIP-Basic



Electric parts and sensors:

	Denomination	Manufacturer	Type
Pneumatic Installation			
PIP001	2/2-way-solenoid valve	Norgren	8240402
Pressure vessel			
PIP002	full level switch	Endress+Hauser	FTM51
Butterfly valve			
PIP003	Induktive Initiatoren	IFM	IN5225
PIP004	Namur-solenoid valve actuator	Norgren	9710000
PIP005	solenoid valve inflatable sealing	Norgren	2623100
PIP006	pressure switch inflatable sealing	Wika	PSM02
Deaeration unit			
PIP007	pressure sensor	Endress+Hauser	PMP131
PIP008	inductive initiators ball valve	IFM	IN5225
PIP009	Namur-solenoid vane ball valve	Norgren	9710000



solids solutions group
www.solids.eu





Datasheet solids – Pneumatic Sender PIP-Basic



Options:

1. Product temperature max: 120° C
2. Electrical components outside for zone 2/22
3. Electrical components outside for zone 1/21
4. Pneumatic installation in cabinet
5. Wiring of the electrical equipment and measuring points on the cabinet
6. Sender mobile with rolls at the support
7. Non-stick coating inside
8. Other outlet diameter Ø65, 80, 100, 125, 150
9. Sensoric for measuring of compressed air flow, temperature, humidity and pressure incl. reader unit for registration and signal processing via ethernet IP (Cloud) according industry 4.0
10. Suitable for -20°C ambient temperature with special valves and ejector (release of the inflatable sealing)
11. From the electric parts list deviating suppliers with special documentation



solids solutions group
www.solids.eu

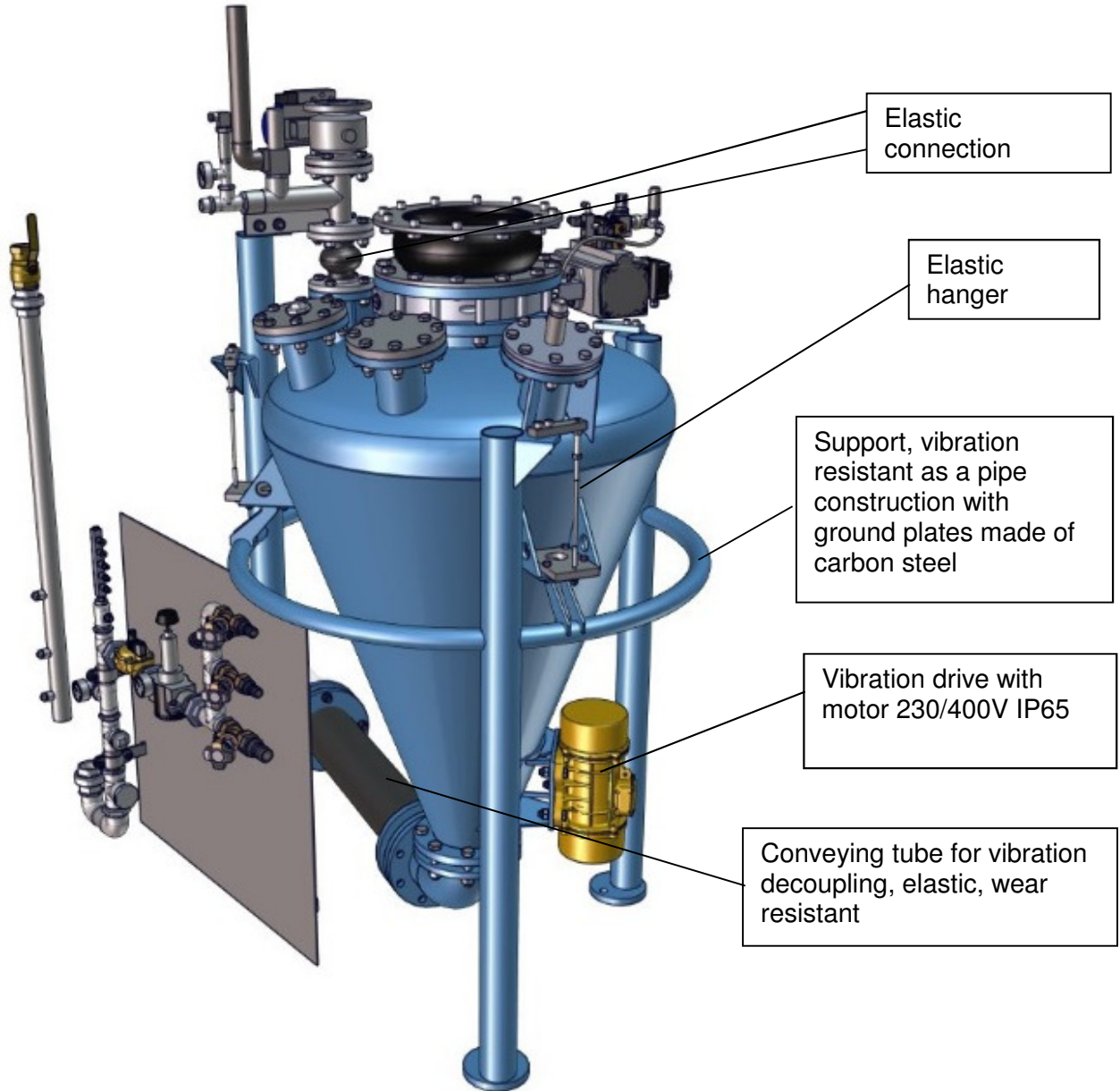




Datasheet solids – Pneumatic Sender PIP-Basic



12. Vibro-sender type PIV-Basic
for mass flow, cohesive up to
non-flowing products



solids solutions group
www.solids.eu

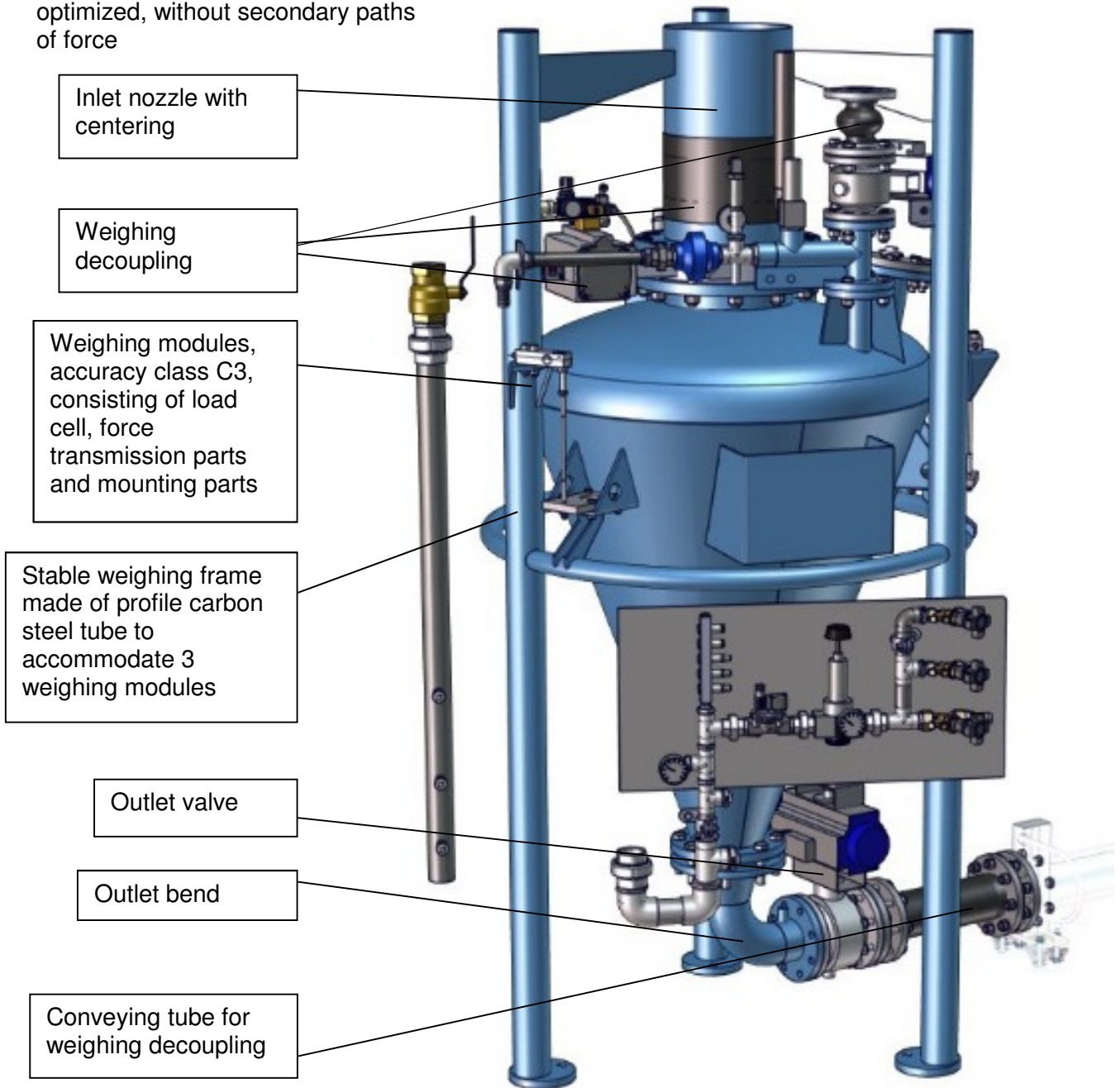




Datasheet solids – Pneumatic Sender PIP-Basic



13. Sender-scale type PIS-Basic, all connections of the conveyor (bulk solids, pneumatic, electrical) are optimized, without secondary paths of force

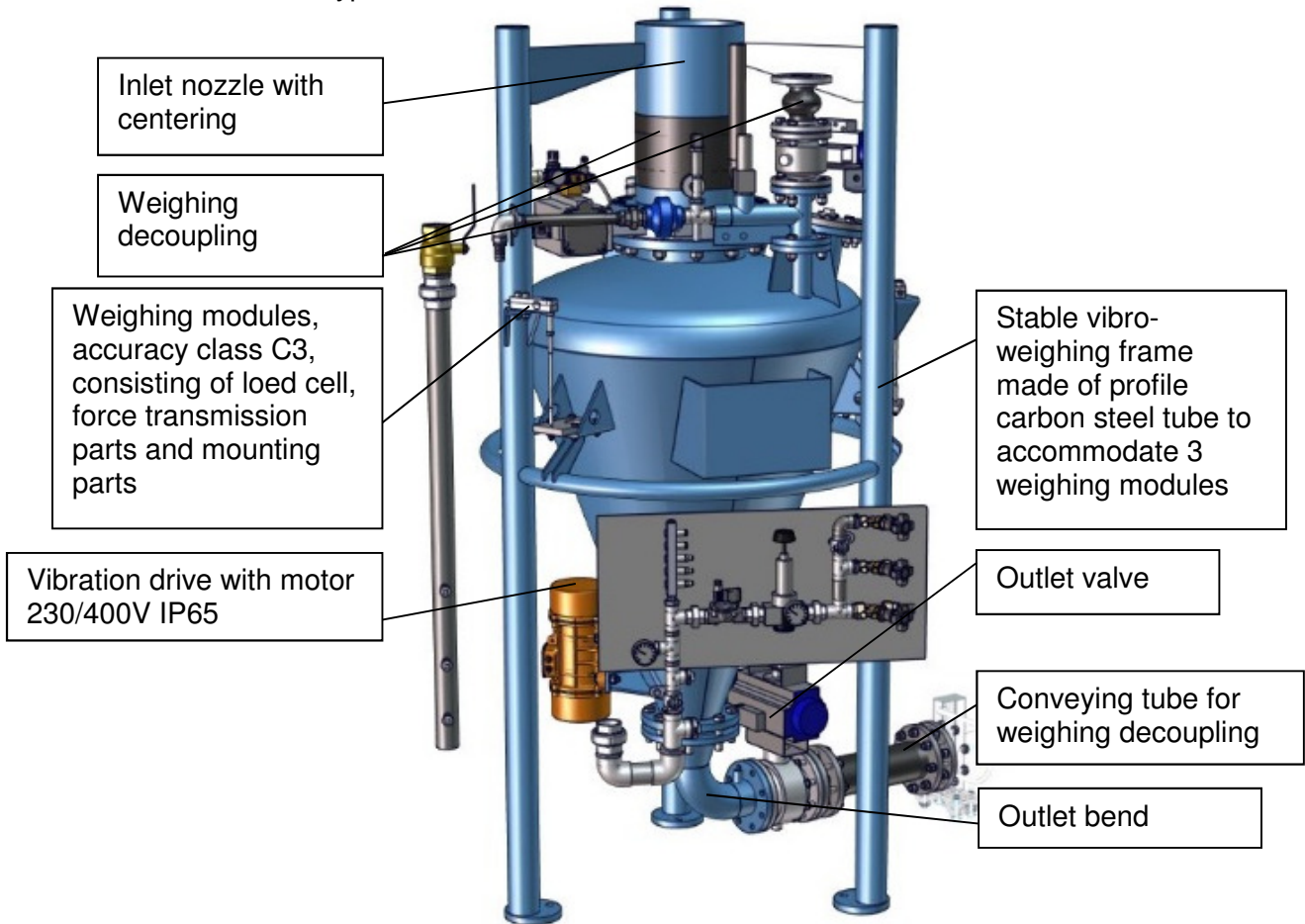




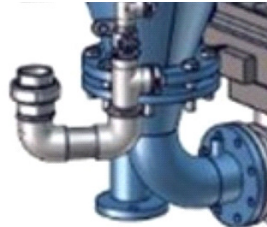
Datasheet solids – Pneumatic Sender PIP-Basic



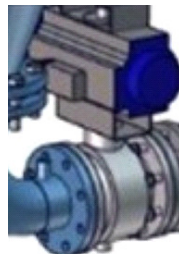
14. Vibro-sender-scale type PIVS-Basic



15. Outlet bend for cohesive products and mass flow



16. Outlet valve (ball valve with purge air) for complete emptying and flush function



Related documents:

3D-Part: Type.step (example: **PIP01207B01**. Step)

2D-planning drawing: Type.dxf (example: **PIP01207B01**. dxf)

Selection criteria: SG-Sender

Pricelist: PL-PIP-Basic

Drawing numbers list: Draw-No-List_PIP-Basic



solids solutions group
www.solids.eu

